

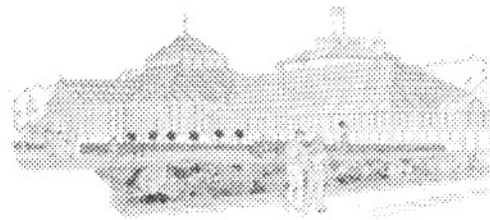
[Back to Site](#)

Salford City Council

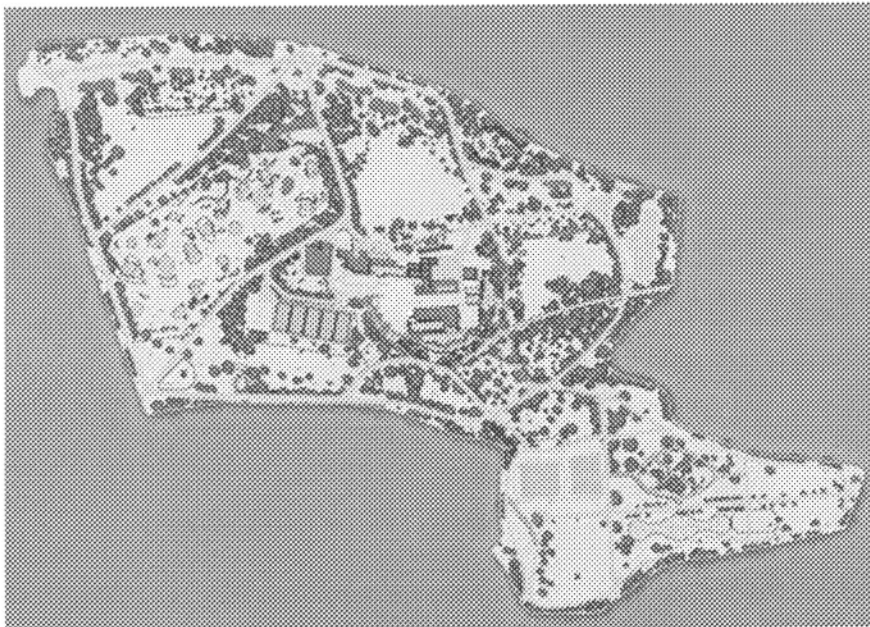
Buile Hill Park Restoration

Salford parks bosses have drawn up a £7 million masterplan to transform historic Buile Hill Park.

A bid for £3 million has been submitted to the Heritage Lottery Fund, and now holds the key to the restoration of the grade II listed park. That grant would help fund the £4.2 million first phase of the scheme, with a mixture of other funding making up the cost of the scheme.



Other funding plans are still being completed for the rest of the scheme.



New investment by the city council in recent years at Buile Hill has already included the development of two new playgrounds; re-surfacing of paths within the park, and the creation of a tropical plant collection and tree trail.

Said environmental services lead member Councillor Maureen Lea: "Buile Hill Park is a superb example of a 19th century Victorian park and there are some superb features which are worth preserving and building upon.

"People want somewhere safe and attractive to walk, relax and take their children to play. Salford has a very proud reputation as a pioneer of public parks, and we will do all we can to develop our parks and restore them to their former splendour."

Find out more about our plans

- [What's in store?](#)
- [Buile Hill Park timeline](#)
- [Key dates for the project](#)

Who to contact

Name	Alan Rowley
Address	Environmental Services Crompton House 100 Chorley Road SALFORD M27 6ES
Telephone	0161-925 1003
E-mail	alan.rowley@salford.gov.uk

<http://www.salford.gov.uk/leisure/parks/parks-gardens/builehill/builehill-restoration.htm>

© Copyright Salford City Council 2003.

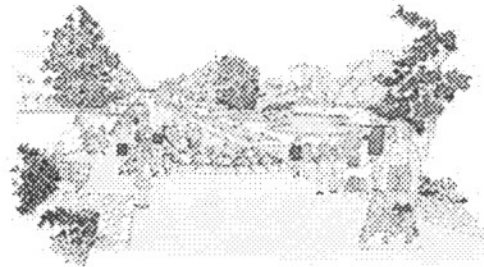
Whether you are looking for somewhere to live, work, play, visit, study or invest, you can do it IN Salford.

[Back to Site](#)

Salford City Council

What's in store?

The plans, drawn up in partnership with the Buile Hill Park community action group and the Friends of Buile Hill Park, include conversion of the present nursery and workshops to craft shops, cafeteria, heritage and environmental resource centres and a pets corner.



Restoration of key features including the grand Burma teak conservatory and Victorian vinery, Seedley Park Lake, the lodge house and ornate gates to the Eccles Old Road entrance, along with a new bandstand, are all included in the plans.

Improvements will be made to paths, all entrance points, tennis courts, picnic areas, Bowling Greens and a number of other features of the existing park.

Improved security, school activities, heritage interpretation and new cultural events are all high on the priorities.

Key proposals and improvements

- Restoration of Buile Hill conservatory
- Restoration of shrub beds
- Restoration of footpaths
- Return of the vinery
- Return of Seedley Park lake
- Return of Seedley Park fountain
- Return of the bandstand
- Bowling green improvements
- Modern 5-a-side football pitches
- Restoration of the tennis courts
- Restoration of golf course
- Heritage/Visitor centre
- New, improved toilets
- Improved car parking
- New signs, seating & shelters
- Garden centre
- Pet area
- Cafe
- Volunteer opportunities
- Gardening workshops
- Qualifications & Apprenticeships
- Sports & arts clubs
- Trail & quizzes

<http://www.salford.gov.uk/leisure/parks/parks-gardens/builehill/bh-whatsinstore.htm>

© Copyright Salford City Council 2003.

Whether you are looking for somewhere to live, work, play, visit, study or invest, you can do it IN Salford.

[Back to Site](#)

Salford City Council

Timeline

Buile Hill Park has had a long and varied life. This timeline charts the major events.

1590

Plague victims buried in pit in Hart Hill meadow

1825

Buile Hill mansion and estate built

1876

The official opening of Seedley Park on the 17 June

1903

Buile Hill Park officially opened on 22 July

1906

Buile Hill mansion opened as a Natural History museum

1909

Two tennis courts built

1916

Anti-aircraft gun fixed in Buile Hill Park

1928

Buile Hill conservatory is opened

1934

An 18 hole pitch and putt course is opened

1938

The new cafe and the Har Hill extension are officially opened

1939

The Parks Office becomes the headquarters of C Flight of the RAF Balloon Barrage

1940

A bomb is dropped on Buile Hill

1941

Salford blitz

1943

Iron fencing along Eccles Old Road boundary removed for manufacture of bullets

1945

V.E. Day celebrations take place in Buile Hill. Seedley Park lake is filled in

1948

Reinstatement of Buile Hill conservatory

1963

A garden for the blind is officially opened

1972

Pets corner is opened



1975

Natural History Museum replaced by Salford Museum of Mining



1980

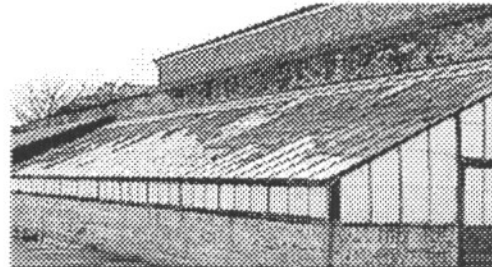
Buile Hill mansion listed as a Grade 2 listed building

2000

Lancashire Mining Museum closes

2001

Buile Hill Park listed as a Grade 2 designated park



<http://www.salford.gov.uk/leisure/parks/parks-gardens/builehill/bh-timeline.htm>

© Copyright Salford City Council 2003.

Whether you are looking for somewhere to live, work, play, visit, study or invest, you can do it IN Salford.

[Back to Site](#)

Salford City Council

Key dates



July 2003	Stage 1 application made to Heritage Lottery Fund
February 2004	Preparation of Stage 2 application
December 2004	Stage 2 application made
April 2005	Work starts in Buile Hill Park
April 2006	Buile Hill conservatory restored Vinery restored Tennis courts restored Secure car parking created New football area created Virtual reality tour made
April 2007	Seedley Park lake returns Buile Hill bandstand returns Seedley Park fountain returns Work begins to the Heritage Centre Training opportunities created
April 2008	New seating, shelters, signs installed Refurbished toilets opened Entrance upgraded Footpaths restored Shrub beds and planting restored Garden centre and cafe opens

[Back to Site](#)

Salford City Council

Buile Hill Park

Located within the Claremont and Weaste area of Salford Buile Hill Park is a Grade II listed Park of National Historic Importance.

It has had a long and varied history with links to many important historical figures. Some of the lesser known facts include links to a certain Mr L.S. Lowry, a one time local rent collector who frequented the park before gaining recognition for his works of art. Emmaline Pankhurst the local girl turned suffragette and Frances Hodgson Burnett author of the classic children's novel "The Secret Garden" rumoured perhaps romantically to have been written during one of her many visits to Buile Hill Mansion.



Buile Hill Mansion circa 1910

Both Manchester and Salford were extremely influential in the Public Parks movement. With the opening of Peel Park in 1846 Salford has a claim of being home to the World's first Public Park.

The devastating effects of the Industrial Revolution on areas such as Ancoats and Hulme in our neighbouring city of Manchester led to Salford rapidly establishing a series of smaller parks within its many neighbourhoods before the surrounding areas were built on. In response to this Seedley, Broughton and Ordsall Parks were created and opened in 1876.

Adjacent to Seedley Park laid the Buile Hill Estate, home of the first Lord Mayor of Manchester. Due to the success of Seedley Park and the by now overwhelming demand for more parks negotiations began with the owners of the Buile Hill estate. In 1902 the Buile Hill estate was eventually bought. A year later it opened as Buile Hill Park. In 1925 the adjoining Hart Hill Estate was bought and finally in 1927 the large mansion of Springfield residence was added. The merger of the Springfield Estate with Seedley and Buile Hill Park removed the last physical barrier between the two parks and the whole area became officially known as Buile Hill Park.

Today Buile Hill Park covers an area of approximately 35 hectares. Whilst some of the historic features have been lost over the past century the park itself has survived largely intact. During the past 3 years a slow but steady series of improvements has begun. New play areas have been built, many of the once grand carriageways re-surfaced, dangerous trees have been replaced and areas of planting renewed. Home to the popular Buile Hill Park Banqueting Suite and the Salford Consortium Training Centre the park provides an attractive environment for local people. It features an 18 hole pitch & putt course, tennis courts, tropical plant collections, play areas, picnic areas - as well as what is thought to be the world's first 'interactive' tree trail! An open air venue for funfairs and events it remains Salford's favourite public park.



Opening of Buile Hill Park Play area 25th September 2002

Who to contact

Name	Ian Worsley
Address	Environmental Services Crompton House 100 Chorley Road Swinton Salford M27 6ES
Telephone	0161-736 8911
E-mail	ian.worsley@salford.gov.uk

<http://www.salford.gov.uk/leisure/parks/parks-gardens/builehill.htm>

© Copyright Salford City Council 2003.

Whether you are looking for somewhere to live, work, play, visit, study or invest, you can do it IN Salford.